



# Lindsey's Artemis; Ingrid's '80s; All in the Family, Baby Shark! and More

Dancing electric violinist Lindsey Stirling kicked off her *Artemis* world tour in October with **Alec Spear's** production design. Artemis is a "goddess of the moon" character Stirling created, which inspired her album and tour. Spear also served as content/video director on the first European leg. "Lindsey is a great friend," says Spear, who has also been fabricating a few props and scenic pieces for her "Warmer in the Winter Christmas Tour" in his creative workshop in Utah. He will serve as media server and content director for that trek as well.

## » Ingrid's '80s

Ingrid Michaelson is on her "Dramatic Tour" with Lighting director **Jason Hartwyk** at the helm. The only piece he's carrying on the '80s themed show is an LED sign displaying Ingrid's name. "It's a bit of a challenge, being that are playing a myriad of different sized venues with different levels of in-house production," Hartwyk explains. "I'm using house rigs everywhere creating the show daily, with whatever I have to use."

## » Diving into *Baby Shark Live!*

**Robb Jibson** of design firm SoMidwest dove into the content creation pool with the *Baby Shark Live!* tour. The fully immersive concert experience — inspired by the hit children's song — kicked off its 100-city North American run in October. "I've been steering the SS SoMidwest toward content creation, and this marks the first project that we didn't do any of the lighting," Jibson says. "We collaborated with some amazing directors, lighting, scenic, choreographers and costume designers to create an amazing show." The live event consists of 65 minutes of custom animation of motion scenes and backgrounds — and baby sharks, of course — which interacts with the kids and parents.

## » All in the Family

It was a family affair at Eric Clapton's Crossroads Guitar Festival for two nights in Dallas recently. Production designer **Dave Maxwell** and Clapton's lighting director **Ethan Weber** were assisted by the Wade family. **Eric Wade** served as Crossroads lighting director, bringing in twin sons **Brandon Wade** as lighting programmer and **Aaron Wade** as media server programmer/tech. The seniors at Oklahoma University Fine Arts are majoring in — of course — lighting design.

The proud father boasts, "Brandon's first tour right out of the gate was lighting crew on Paul McCartney. Not a bad gig

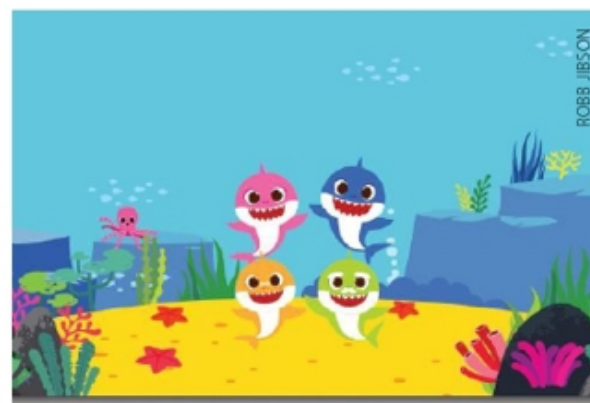


for your first one! He recently went out all summer as lighting director on Nelly, TLC and Flo-Rida; did Usher shows with me and went on the last Saudi Arabia trip as a WWE programmer. Aaron toured with Miranda Lambert last year and has been programming content for Usher for me. He also programmed lighting and content for the WWE Hall of Fame TV show. Both worked with Top Rank Boxing as well. It's really cool seeing my sons stepping right in and doing incredible work."

Meanwhile, **Troy Eckerman** has pulled his progeny into the production as well. After working Farm Aid with LD **Jason Robinson**, he hoofed it to Houston to illuminate the Houston Astros' baseball stadium in their team colors for the World Series playoffs. But for a small corporate tour he designed called "Service Now," his son **Caleb Eckerman** is working as a programmer/operator. "I *did* teach him everything," Eckerman assures. "He has been working at Fellowship Church in the Woodlands, TX. And he learns his own shortcuts along the way. But the most impressive part is that he has a good eye for lighting. And understands how it works in your favor and then sometimes not in your favor."

## » 44Designs Doubles

**Jeff Lavallee** and **44Designs** doubled their space moving into a new 12,000 square foot facility this summer in Goodlettsville, TN. And they were still able to work with alt-rock band The Used for the Disrupt Festival touring set. "Inspiration was drawn from their album artwork, so we worked with content creators and fabricators to make an animated show opening like no other," Lavallee notes. "It was made complete with a plastic, vacu-form molded heart with a lighted heartbeat of its own."



Robb Jibson jumped into the content creation pool for the *Baby Shark Live!* tour.

## » Quick Cues

LD **Ben Everett** is wrapping up Maggie Rogers' *Heard It In a Past Life* tour.

LDs **Nathan Alves** and **Seth Jackson** of Darkroom Creative are excited to provide creative direction, production and lighting design for contemporary Christian singer Lauren Daigle's 2020 World Tour.

LD **Paul Turner** is back with Robin Thicke, supporting Fantasia's tour — which was designed by LD **Michael Apostolosis** and operated by lighting director **Ryan Williams**.

LD **Ryan Campbell** is back out again with City and Colour as designer/director, kicking off in Canadian arenas Nov. 19, with worldwide dates running 2020-2021.

LD **Carl Burnett** is on a quick U.K. run in November with British musical duo Lighthouse Family.

LD **Jon Weir** is lighting Christian rock band MercyMe on their "Imagine Nation Tour," hitting U.S. arenas until Thanksgiving.

LD **Nesta Garrick** is touring the U.S. with Common Kings. In December, he boards the "Welcome to Jamrock" reggae cruise hosted by Damian Marley, serving as the production designer, lighting and visual designer for five days on the ship. Next trip: Mexico with Stephen Marley.

PLSN

Send Debi Moen holiday greetings — and info of what you're planning for the New Year — in time for the December issue. Reach her at [dmoen@plsn.com](mailto:dmoen@plsn.com).

## » ADVERTISER'S INDEX

| COMPANY   | PAGE       | ON THE WEB              | COMPANY                           | PAGE   | ON THE WEB              | COMPANY                        | PAGE       | ON THE WEB                  |
|---|------------|-------------------------|-----------------------------------|--------|-------------------------|--------------------------------|------------|-----------------------------|
| Absen American Inc.                             | 10         | usalbsen.com            | Electronic Theatre Controls, Inc. | 33     | etcconnect.com          | Opti-Case                      | 135        | opti-case.com               |
| AC Lighting Inc.                                | 7, 75      | aclighting.com          | Equipson SA                       | 119    | equipson.es             | Orange Frog Productions        | 38         | orangefrogproductions.ca    |
| ADI Products LLC                                | C2         | adi.com                 | ER Laser Prods Inc.               | 64     | er-productions.com      | Pangolin Laser Systems, Inc.   | 99         | pangolin.com                |
| Acme Global Logistics, Inc.                     | 125        | shipacme.com            | ESI Global LLC                    | 135    | eventservicesinc.com    | Pathway Connectivity Solutions | 72         | pathwayconnect.com          |
| Advanced Entertainment Services                 | 125        | aesgpro.com             | G2 Structures LLC                 | 61     | g2structures.com        | Premier Global Production      | 14         | premierglobalproduction.com |
| All Access Staging and Production               | 91         | allaccessinc.com        | Gamma LED Vision                  | 129    | gammaledivision.com     | Pyrotecnico                    | 69         | pyrotecnico.com             |
| Analog Way                                      | 22         | analogway.com           | Global Trend Pro                  | 13     | globaltrendpro.com      | Pyrotek Special Effects, Inc.  | 73         | pyrotekfx.com               |
| Antari Lighting and Effects USA                 | 77         | antari.com              | Gloshine                          | 60     | gloshine.com            | RC4 Wireless                   | 59         | theatrewireless.com         |
| Applied Electronics                             | 78         | appliedin.com           | GLP German Light Products Inc.    | 95     | germanlightproducts.com | ROBE Lightings, r.o.c          | 5          | robelighting.com            |
| Arista Corporation                              | 48         | goarista.com            | High End Systems, Inc.            | 53     | highend.com             | Rock-It Cargo USA, LLC         | 115        | rockitcargo.com             |
| Astera Manufacturing Ltd.                       | 17         | astera-led.com          | iWiss                             | 57     | iwiss.com               | ROE Creative Display           | 111        | roevisual.com               |
| Atlanta Rigging Systems                         | 18, 135    | atlantarigging.com      | Image Engineering                 | 81     | image-engineering.de    | Rose Brand                     | 127        | rosebrand.com               |
| Avolites  | 103        | avolites.com            | Image SFX                         | 79     | imagesfx.com            | Signify                        | 51         | signify.com                 |
| Ayrton  | 85         | ayrton.eu               | infiled                           | 23     | infiled.com             | Solotech                       | 68         | solotech.com                |
| Bandit Lite                                     | 29, 83     | banditlites.com         | inoage GmbH                       | 20     | inoage.de               | Stageline Mobile Stage Inc.    | 55         | stageline.com               |
| Barbizon Lighting Company                       | 133        | barbizon.com            | Integrated Systems Europe (ISE)   | 12     | iseurope.org            | Staging Dimensions Inc.        | 31         | stagingdimensions.com       |
| Bardco, Inc.                                    | 135        | bardco.com              | J.W. Winco, Inc.                  | 100    | jwwinco.com             | StarWay Productions            | 110        | starway.com                 |
| Blaclmagic Design                               | 9          | blaclemagicdesign.com   | JDI Productions                   | 30     | jdiproductions.com      | Strictly FX LLC                | C3         | strictlyfx.com              |
| Blizzard Lighting                               | 107        | blizzardpro.com         | Kinetic Lights                    | 47     | kinetic-lights.com      | Swisson                        | 71         | swisson.com                 |
| Brompton Technology Ltd.                        | 130        | bromptontech.com        | L8 LLC                            | 87     | l8llc.com               | Taylorlids                     | 70         | taylorlids.com              |
| Brown Note Productions                          | 89         | brownnote.com           | Le Maître Ltd.                    | 52     | lemaitretd.com          | The Light Source               | 6, 21, 101 | thelightsource.com          |
| Bulbtronics                                     | 16         | bulbtronics.com         | Light Source Inc.                 | 135    | lightsourceinc.com      | Theatre Effects                | 135        | theatrefx.com               |
| Chauvet   | C1, 8, 63  | chauvetprofessional.com | Light Parts Inc.                  | 135    | lightparts.com          | Tools for Stagecraft           | 135        | toolsforstagecraft.com      |
| City Theatrical, Inc.                           | 54         | citytheatrical.com      | Lighttronics Inc.                 | 1      | lighttronics.com        | Tyler Truss Systems            | 65         | tylertnuss.com              |
| Clay Paky S.p.A.                                | 15         | claypaky.it             | Link USA                          | 100    | linkusa-inc.com         | Ultratec Special Effects Inc.  | 4          | ultratecfx.com              |
| Clearwing USA                                   | 46         | clearwing.com           | Local One IATSE, AFL-CIO          | 123    | latselocalone.org       | Upstaging                      | 62         | upstaging.com               |
| CPL   | 117        | cpl.tech                | Luxium Lighting LLC               | 128    | luxiumlighting.com      | Upstage Video                  | 109        | upstagevideo.com            |
| Dicolor   | 26         | dicolor.cn              | Macroblock Inc.                   | 84     | mblock.com.br           | Upstate Case Mfg. Co.          | 135        | upstatecase.com             |
| Disguise Systems Inc.                           | 113        | disguise-one.com        | Milos Structural Systems          | 27     | milosystems.com         | Vanguard Displays              | 2, 3       | vanguardled.com             |
| Doug Floenor Design Inc.                        | 26         | dofd.com                | Moo TV                            | 93     | mootv.com               | Volt Live                      | 108        | vollive.com                 |
| East Coast Lighting & Production Services, Inc. | 40         | eclops.com              | Musique Xpress Lights             | 114    | moxpr.com               | Whirlwind Music Inc.           | 11         | whirlwindusa.com            |
| Eggshell Lighting Company, Inc.                 | 39         | eggshellinc.com         | NAMM                              | 34, 35 | namm.org                | X-Laser USA                    | 105        | x-laser.com                 |
| Elation   | 49, 67, C4 | elationlighting.com     | Northern Lights Productions       | 41     | nlpprod.com             | Yestech                        | 24, 25     | yes-led.com                 |